

THE COURT

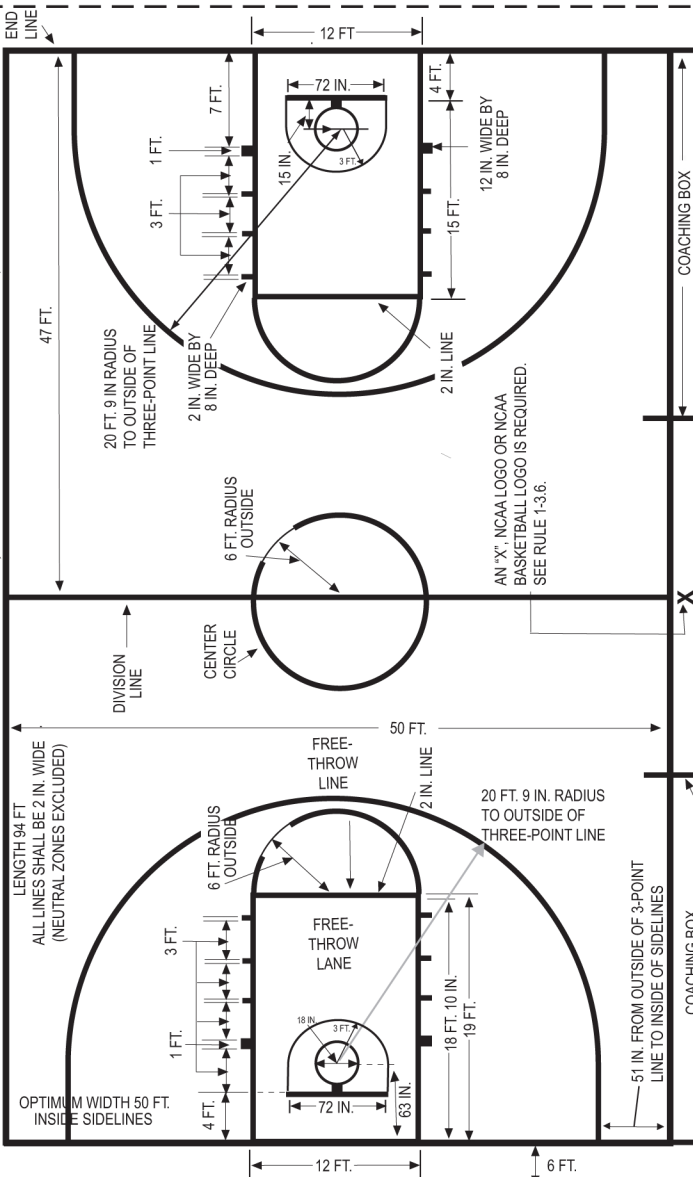
MINIMUM of 3 FT.
Preferably 10 ft. unobstructed space outside

LENGTH 94 FT.
ALL LINES SHALL BE 2 IN. WIDE
(NEUTRAL ZONES EXCLUDED)

OPTIMUM WIDTH 50 FT.
INSIDE SIDELINES

SIDELINE

(Must be at least 8 inches wide if a contrasting
color belt is used instead of 2-inch-wide line.)



47 FT.

20 FT. 9 IN. RADIUS
TO OUTSIDE OF
THREE-POINT LINE

2 IN. WIDE BY
8 IN. DEEP

6 FT. RADIUS
OUTSIDE

CENTER
CIRCLE

FREE-
THROW
LINE

FREE-
THROW
LANE

AN "X", NCAA LOGO OR NCAA
BASKETBALL LOGO IS REQUIRED.
SEE RULE 1-3.6.

20 FT. 9 IN. RADIUS
TO OUTSIDE OF
THREE-POINT LINE

51 IN. FROM OUTSIDE OF 3-POINT
LINE TO INSIDE OF SIDELINES

COACHING BOX

TEAM BENCH
3 FT. EXTENDED ONTO COURT
AREA

SCORERS' TABLE

COACHING BOX

28 FT.

COURTSIDE (APPROXIMATELY 3 TO
12 FEET FROM THE BOUNDARY LINES)
AREA

SEE RULE 4-7

SEE RULE 4-7

RESTRAINING
LINE

END
LINE

12 FT.

3 FT.

1 FT.

7 FT.

72 IN.

3 FT.

15 IN.

4 FT.

15 FT.

12 IN. WIDE BY
8 IN. DEEP

2 IN. LINE

END LINE

50 FT.

2 IN. LINE

FREE-THROW LINE

18 FT. 10 IN.

19 FT.

63 IN.

72 IN.

6 FT. RADIUS OUTSIDE

3 FT.

1 FT.

4 FT.

3 FT.

6 FT. RADIUS OUTSIDE

20 FT. 9 IN. RADIUS TO OUTSIDE OF THREE-POINT LINE

2 IN. LINE

50 FT.

50 FT.

50 FT.

50 FT.

50 FT.

50 FT.

50 FT.

50 FT.

50 FT.

50 FT.

50 FT.

50 FT.

50 FT.